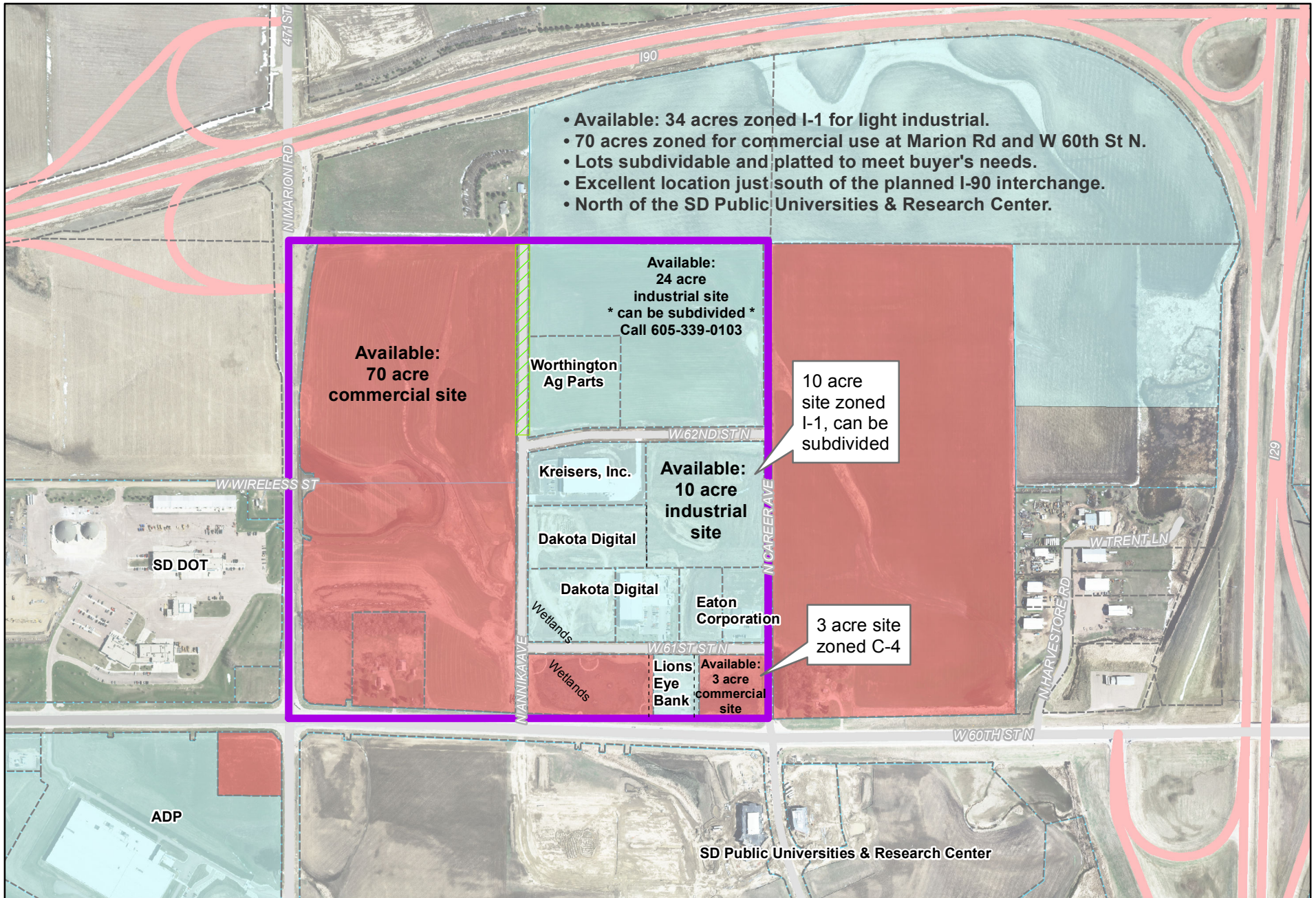


Sioux Empire Development Park 7

Sioux Falls, South Dakota



- Available: 34 acres zoned I-1 for light industrial.
- 70 acres zoned for commercial use at Marion Rd and W 60th St N.
- Lots subdividable and platted to meet buyer's needs.
- Excellent location just south of the planned I-90 interchange.
- North of the SD Public Universities & Research Center.

Available:
70 acre
commercial site

Available:
24 acre
industrial site
* can be subdivided *
Call 605-339-0103

Worthington
Ag Parts

10 acre
site zoned
I-1, can be
subdivided

Kreisers, Inc.

Available:
10 acre
industrial
site

Dakota Digital

Dakota Digital

Eaton
Corporation

3 acre site
zoned C-4

Lions
Eye
Bank

Available:
3 acre
commercial
site

ADP

SD Public Universities & Research Center



Image Date: 5-2008



200 N Phillips Ave, Suite 101
Sioux Falls, SD 57104
Ph. 605-339-0103
www.siouxfallsdevelopment.com

- Sioux Empire Development Park 7
- Planned Commercial
- Light Industrial

