

# Lennox Industrial Park



**LCEDA**  
Lincoln County Economic  
Development Association

**Available Acres:**

18.5 +/-

**Access:**

SD Highway 17 & 44

**Water & Sewer:**

City of Lennox

**Electric Service:**

Xcel Energy

**Telephone & Data:**

Knology  
Midcontinent Communications  
MidAmerican Energy

**Natural Gas:**

<http://www.Lennoxsd.com/>

<http://www.xcelenergy.com>

<http://www.knology.com/>

<http://www.midcocomm.com/>

<http://www.midamericanenergy.com/>

**CONTACTS:** Jeff Eckhoff  
Alan Rops  
Justin Weiland

**LCEDA**  
Lennox Area Development Corp.  
City of Lennox

605.339.0103, toll-free 800.658.3373  
605.647. 2603  
605.647. 2286

[jeffe@siouxflals.com](mailto:jeffe@siouxflals.com)  
[grops@iw.net](mailto:grops@iw.net)  
[lennoxcityadm@iw.net](mailto:lennoxcityadm@iw.net)

**SITE****Lennox Industrial Park****HIGHWAY ACCESS**

South Dakota State Highways 17 & 44  
Four and one-half (4.5) miles W. of I-29

**AVAILABLE LAND**

18.5 +/- Acres

**INFRASTRUCTURE**

City water and sewer, industrial grade streets, natural gas,  
electric (3-phase) and telecom in place.

**ZONING**

Industrial

**GOVERNANCE**

City of Lennox

**PRICE**

TBD

**INCENTIVES**

Property tax abatement (20 / 40 / 60 / 80 / 100)  
Tax Increment Financing on qualifying projects

**TRACK RECORD**

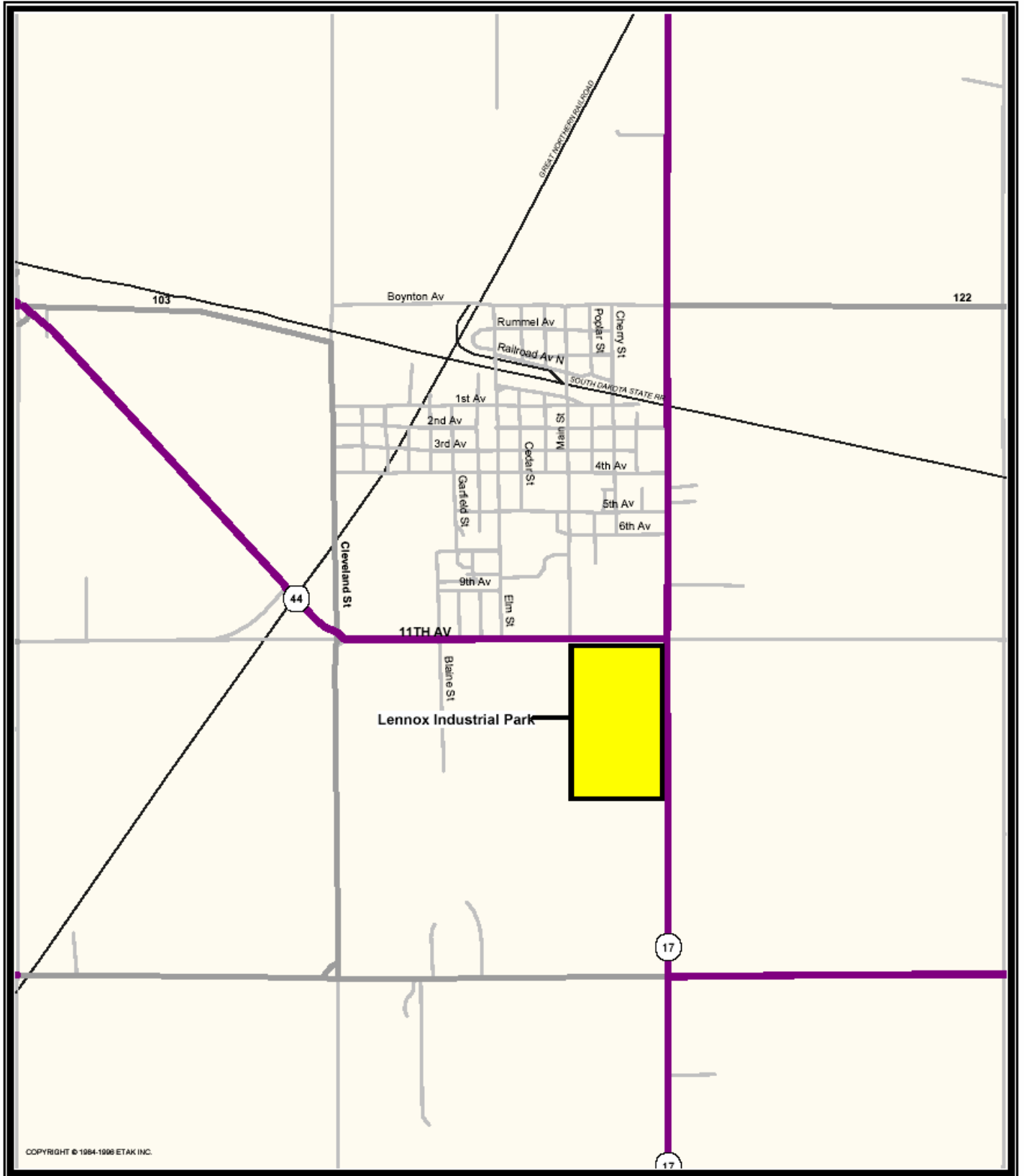
Lennox Area Development Corporation has strong track record  
on offering incentives to companies. Examples include:

- Ware Manufacturing [Parkview Metal Products] (Tax Increment Financing & Land)
- Sioux Steel (Tax Increment Financing & Spec building)
- Wilson Trailers (Tax Increment Financing)

**MAJOR EMPLOYERS**

- Koyker Manufacturing
- Sioux Steel
- Wilson Trailers
- Great Plains Ethanol
- Fusion Plastics

# Lennox Industrial Park



I, STEVEN M. QUINCEY, HEREBY CERTIFY THAT THIS PLAN OR REPORT WAS PREPARED BY ME OR UNDER MY DIRECT SUPERVISION AND THAT I AM A DULY REGISTERED ENGINEER UNDER THE LAWS OF THE STATE OF SOUTH DAKOTA.

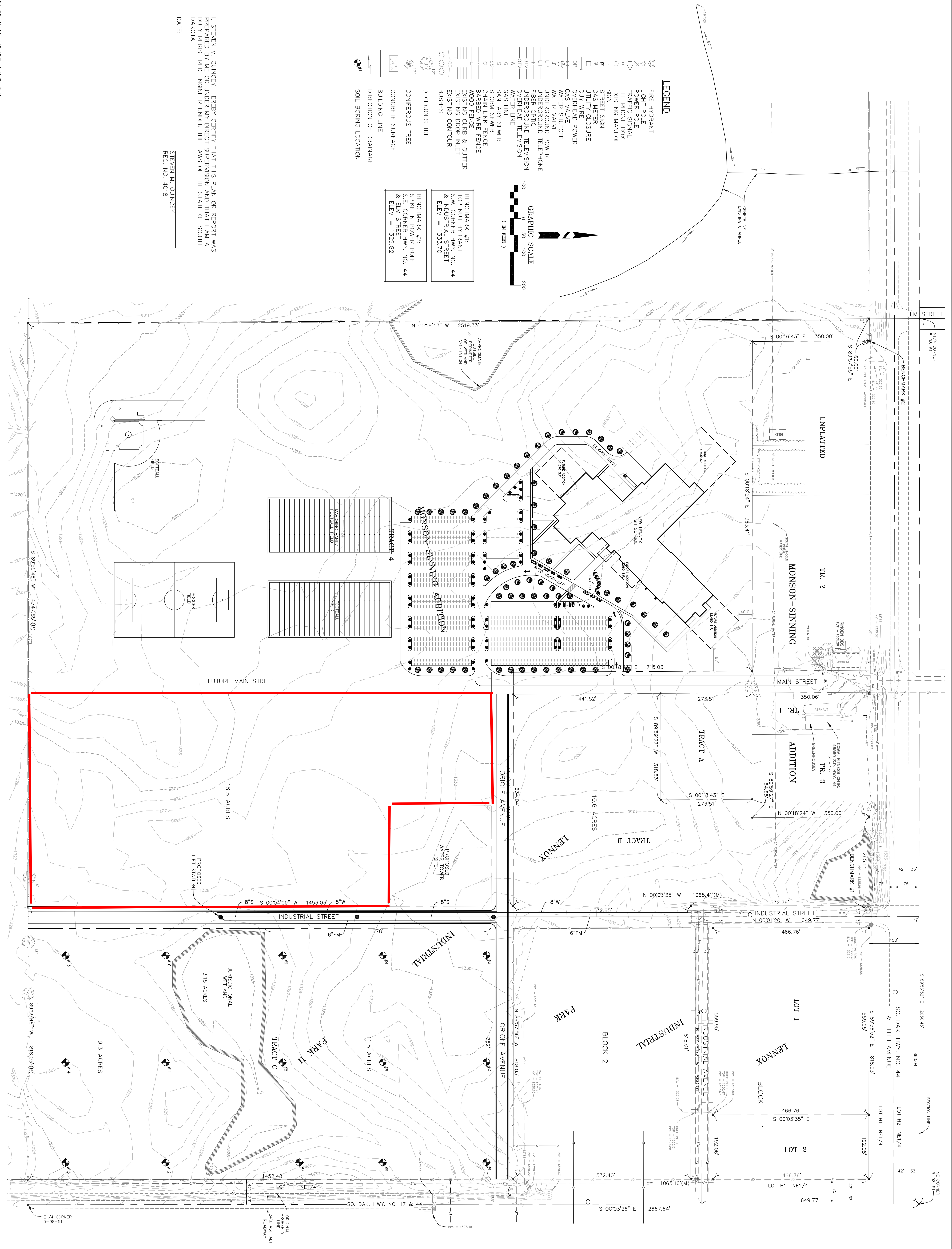
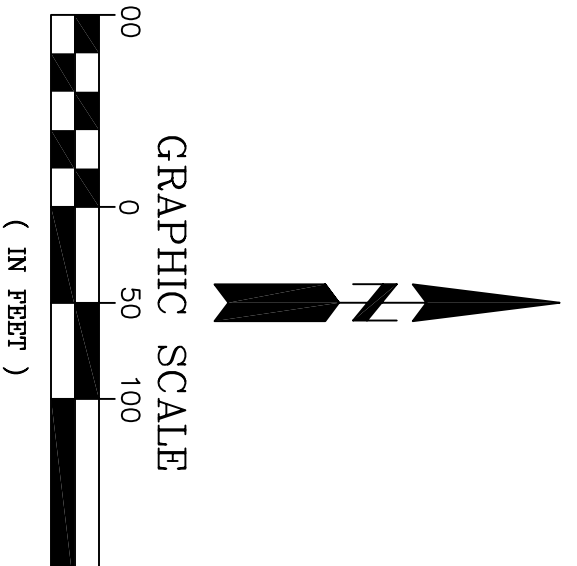
DATE: \_\_\_\_\_

STEVEN M. QUINCEY  
REG. NO. 4018

- LEGEND**
- ☒ FIRE HYDRANT
  - ☒ LIGHT POLE
  - ☒ POWER POLE
  - ☒ TRAFFIC SIGNAL
  - ☒ TELEPHONE BOX
  - ☒ EXISTING MANHOLE
  - ☒ SIGN
  - ☒ STREET SIGN
  - ☒ GAS METER
  - ☒ UTILITY CLOSURE
  - ☒ UTILITY POWER
  - ☒ GAS VALVE
  - ☒ WATER SHUTOFF
  - ☒ UNDERGROUND POWER
  - ☒ UNDERGROUND TELEPHONE
  - ☒ FIBER OPTIC
  - ☒ UNDERGROUND TELEVISION
  - ☒ WATER LINE
  - ☒ WATER MAIN
  - ☒ SANITARY SEWER
  - ☒ STORM SEWER
  - ☒ CHAIN LINK FENCE
  - ☒ BARBED WIRE FENCE
  - ☒ WOOD FENCE
  - ☒ EXISTING CURB & GUTTER
  - ☒ EXISTING DROP INLET
  - ☒ EXISTING CONTOUR
  - ☒ BUSHES
  - ☒ DECIDUOUS TREE
  - ☒ CONIFEROUS TREE
  - ☒ CONCRETE SURFACE
  - ☒ BUILDING LINE
  - ☒ DIRECTION OF DRAINAGE
  - ☒ SOIL BORING LOCATION

BENCHMARK #1:  
TOP OF HYDRANT  
S.E. CORNER  
INDUSTRIAL STREET  
ELEV. = 1333.70

BENCHMARK #2:  
SPIKE IN POWER POLE  
S.E. CORNER HWY. NO. 44  
& ELM STREET  
ELEV. = 1329.82



SHEET NO.: 1	<p>216 S. Duluth Avenue, Box 734 • Sioux Falls, SD 57104 Phone: (605) 332-7211 • Fax: (605) 332-7222</p>	<p>Engineering Solutions</p>	<p>PREPARED FOR: LENNOX AREA DEVELOPMENT CORPORATION</p> <p>PROJECT DESCRIPTION: PRELIMINARY PLAN LENNOX INDUSTRIAL DEVELOPMENT PARK II</p> <p>PROJECT NO.: 16649      CREATED BY: CNR APPROVED BY: SMQ      SURVEYED BY: PG</p>	<p>REVISED: NO.    DESC.    DATE</p>
		<p>1</p>		