

Garretson Industrial Park



MCEDA
Minnehaha County Economic
Development Association

Available Acres:

10 +/-

Access:

SD Highway 11

Streets:

Industrial

Water & Sewer:

Minnehaha Community Water Corp.

City of Garretson

<http://www.garretsonsd.com>

Xcel Energy

<http://www.xcelenergy.com>

Electric Service:

Alliance Communications

<http://alliancecom.net/>

Telecommunications:

City of Garretson

<http://www.garretsonsd.com>

Natural Gas:

CONTACTS:

Jeff Eckhoff
John Brinkman

MCEDA
Garretson Development Corp.

605.339.0103, toll-free 800.658.3373
605. 594.3423

jeffe@siouxfalls.com
jbrinkman@bankeasy.com

SITE

Garretson Industrial Parks

HIGHWAY ACCESS

- South Dakota State Highway 11
- Seven (7) miles N. of I-90

AVAILABLE LAND

- 10 Acres +/-

INFRASTRUCTURE

- Engineering for Water & Sewer completed
- Hook ups nearby
- Electric, gas and data along edge of site

ZONING

Industrial

GOVERNANCE

City of Garretson

PRICE

Negotiable

INCENTIVES

- Property tax abatement (0 / 25 / 50 / 75 / 75 / 100)
- Tax Increment Financing on qualifying projects

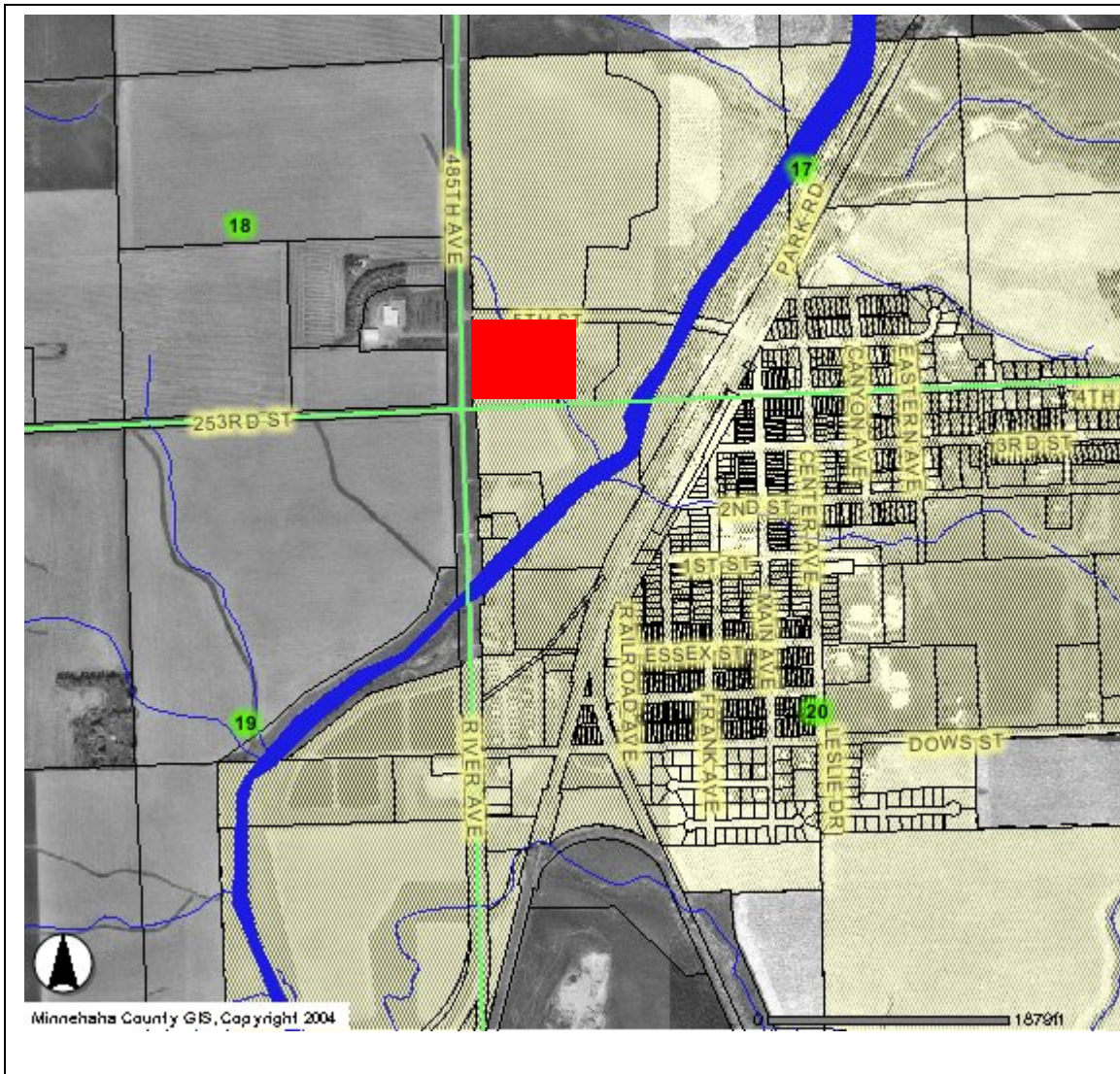
TRACK RECORD

Looking for first tenant

MAJOR EMPLOYERS

Alliance Communications

Garretson Industrial Park Locator Map



CENTER LINE OF 5TH STREET

PROPERTY LINE

CENTER LINE OF HIGHWAY 11

PROPERTY LINE

3

6

7

10

2

5

8

1

4

9



SITE DEVELOPMENT PLAN

PROJECT NAME: GARRETSON INDUSTRIAL DEVELOPMENT CORPORATION	
SHEET DESCRIPTION:	
REVISIONS: _____ _____ _____	
PROJECT NO.: 11	SHEET NO. 2
DRAWN BY: JXX	
CHECKED BY: JXX	
DATE: 11	