

SITE

Dell Rapids Industrial Park

HIGHWAY ACCESS

- Interstate 29
- County Road 115

AVAILABLE LAND

- 5 Acres ± (3 contiguous)
- Approximately 1 acre lots

INFRASTRUCTURE

Streets

- 30' Asphalt (Rural section)

Water and Sewer

- Rural Water
- Holding Tanks

Electricity

- Served by Sioux Valley Energy

Natural Gas

- None

ZONING

- I-1 Industrial

GOVERNANCE

- Minnehaha County

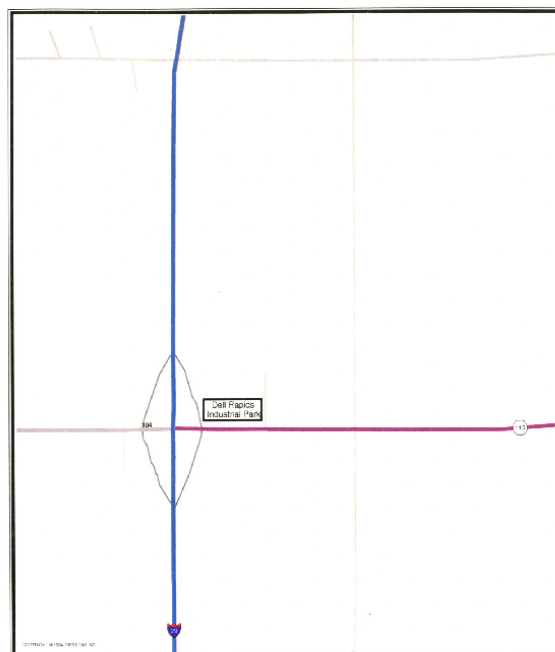
PRICE

- \$17,900 / acre.

**MAJOR EMPLOYERS
(Non Government)**

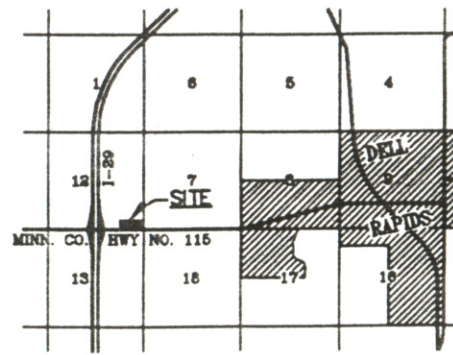
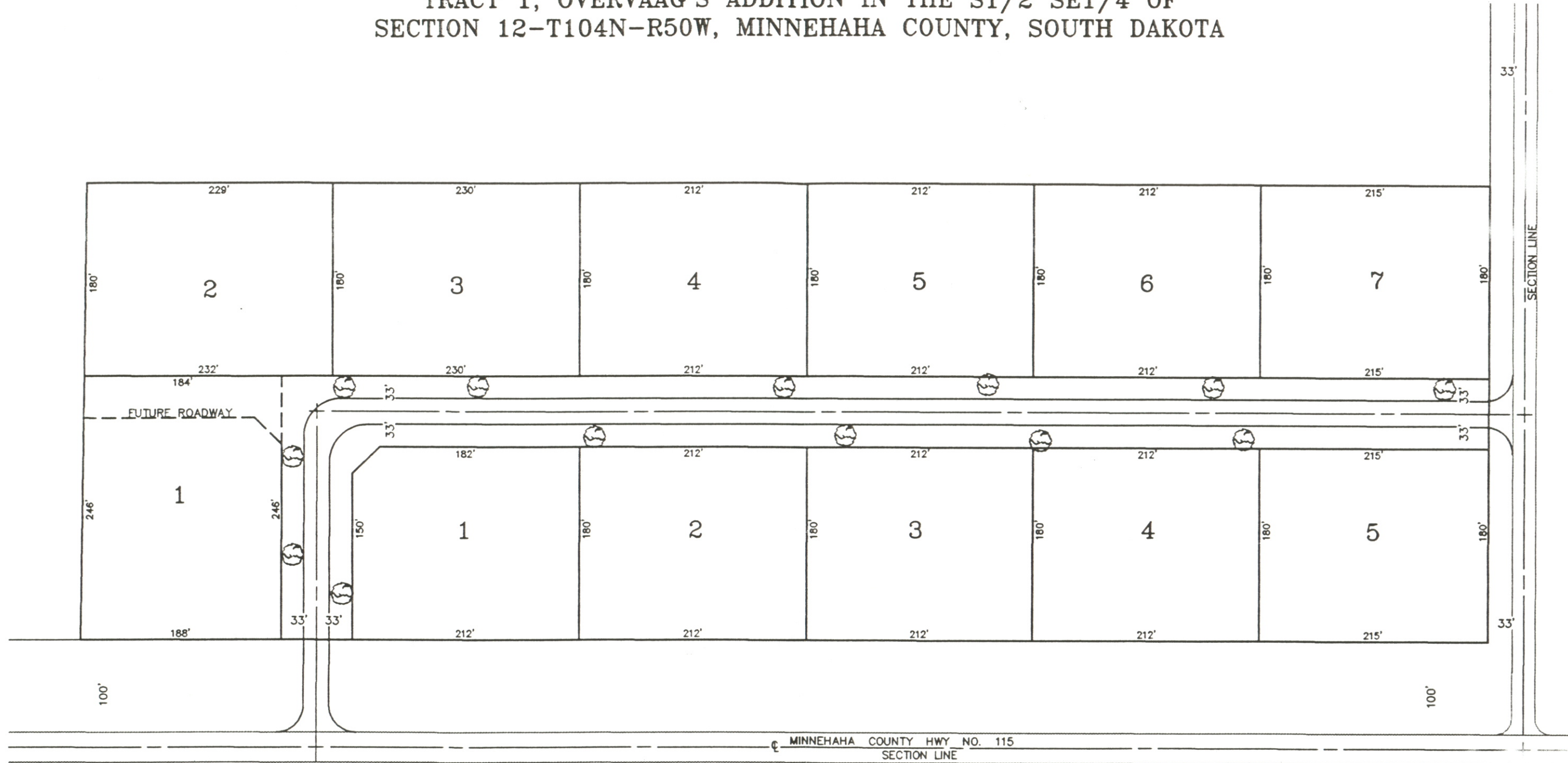
- LG Everist
- Dressen Custom Trailers

Dell Rapids, South Dakota



CONCEPT PLAN

TRACT 1, OVERVAAG'S ADDITION IN THE S1/2 SE1/4 OF SECTION 12-T104N-R50W, MINNEHAHA COUNTY, SOUTH DAKOTA



VICINITY MAP



R.F. SAYRE & ASSOCIATES
ENGINEERS & SURVEYORS
 738 WEST Tenth STREET, SIOUX FALLS, SD

PREPARED FOR
DELL RAPIDS
DEVELOPMENT CORPORATION

DESCRIPTION:
 CONCEPT PLAN FOR:
 TRACT 1, OVERVAAG'S ADDITION IN THE S1/2
 OF THE SE1/4 OF SECTION 12-T104N-R50W,
 MINNEHAHA COUNTY, SOUTH DAKOTA

CREATED BY: JJB	PROJECT NO.: 13332A
SURVEYED BY: --	DATE: 11/96
CHECKED BY: RFS	REVISED: 01/97
SCALE: 1" = 50'	SHEET: 1 OF 1