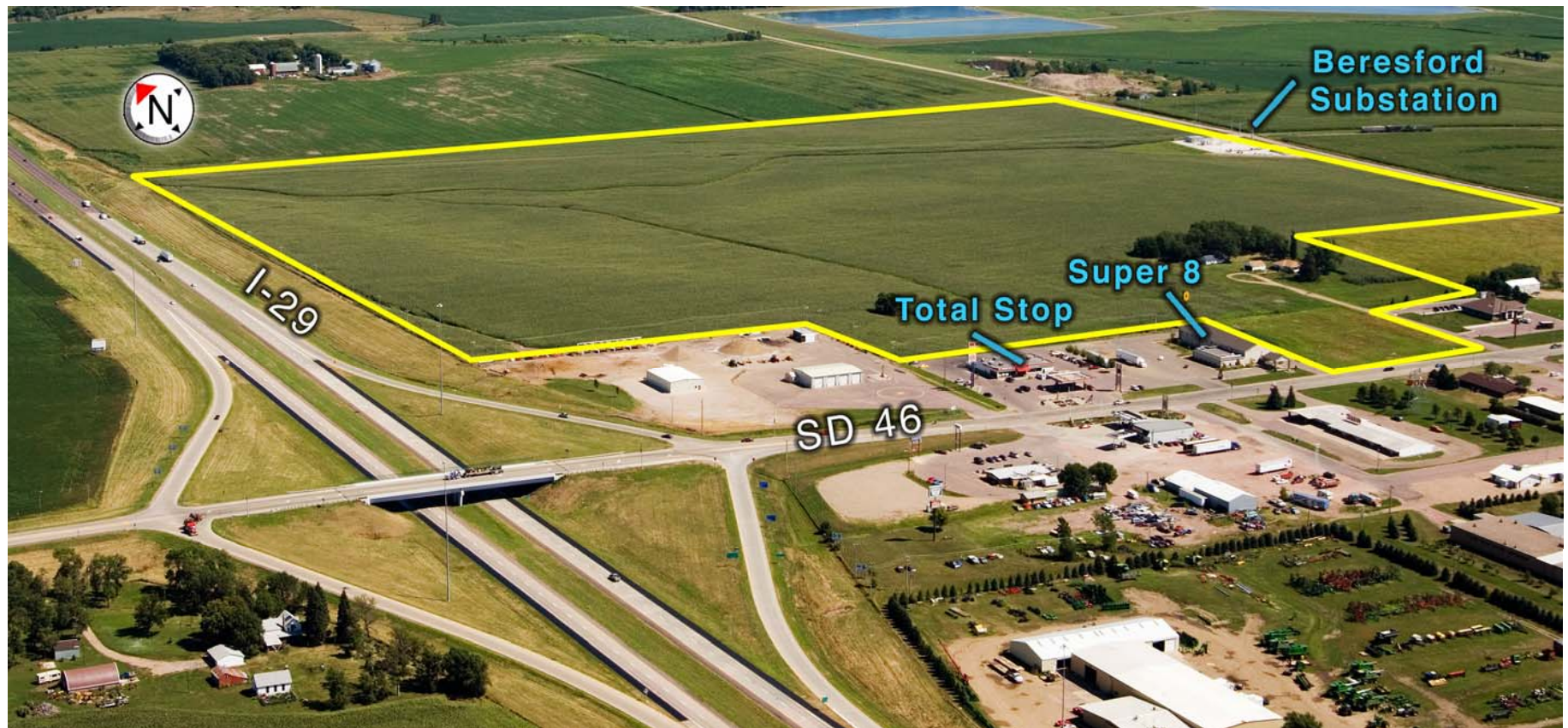


# Beresford Industrial Park



**LCEDA**  
Lincoln County Economic  
Development Association

**Available Acres:** 110  
**Access:** I-29 and SD Highway 46  
**Streets:** 6" Asphalt; Curb & Gutter  
**Water & Sewer:** City of Beresford  
**Electric Service:** City of Beresford  
**Telecommunications:** City of Beresford  
**Natural Gas:** MidAmerican Energy

Construction planned Fall 2006  
<http://www.beresfordsd.com/>  
<http://www.beresfordsd.com/>  
<http://www.beresfordsd.com/>  
<http://www.midamericanenergy.com/>

**CONTACTS:**

Jeff Eckhoff LCEDA  
 Jerry Zeimetz City of Beresford  
 Mark Jensen BEDCO

605.339.0103, toll-free 800.658.3373  
 605.763.2008  
 605.763.2675

[jeffe@siouxfls.com](mailto:jeffe@siouxfls.com)  
[jerry@BMTC.NET](mailto:jerry@BMTC.NET)  
[jensenag@bmtc.net](mailto:jensenag@bmtc.net)

# Beresford Industrial Park

## HIGHWAY ACCESS

- Interstate 29
- South Dakota State Highway 46

## AVAILABLE LAND

- 110 Acres

## INFRASTRUCTURE

Phase I Water, sewer and street to be completed Spring 2007

### *Water & Sewer*

- 12" Water Line
- Forced Main Sanitary Sewer

### *Streets*

- 6" Asphalt
- Curb, Gutter & Storm Drainage

### *Electricity*

- Substation on site

### *Natural Gas*

- 2" 60 psi to property line

## ZONING

- Industrial

## GOVERNANCE

- City of Beresford

## PRICE

- To be determined

## INCENTIVES

- Property tax abatement (20 / 40 / 60 / 80 / 100)
- Tax Increment Financing on qualifying projects

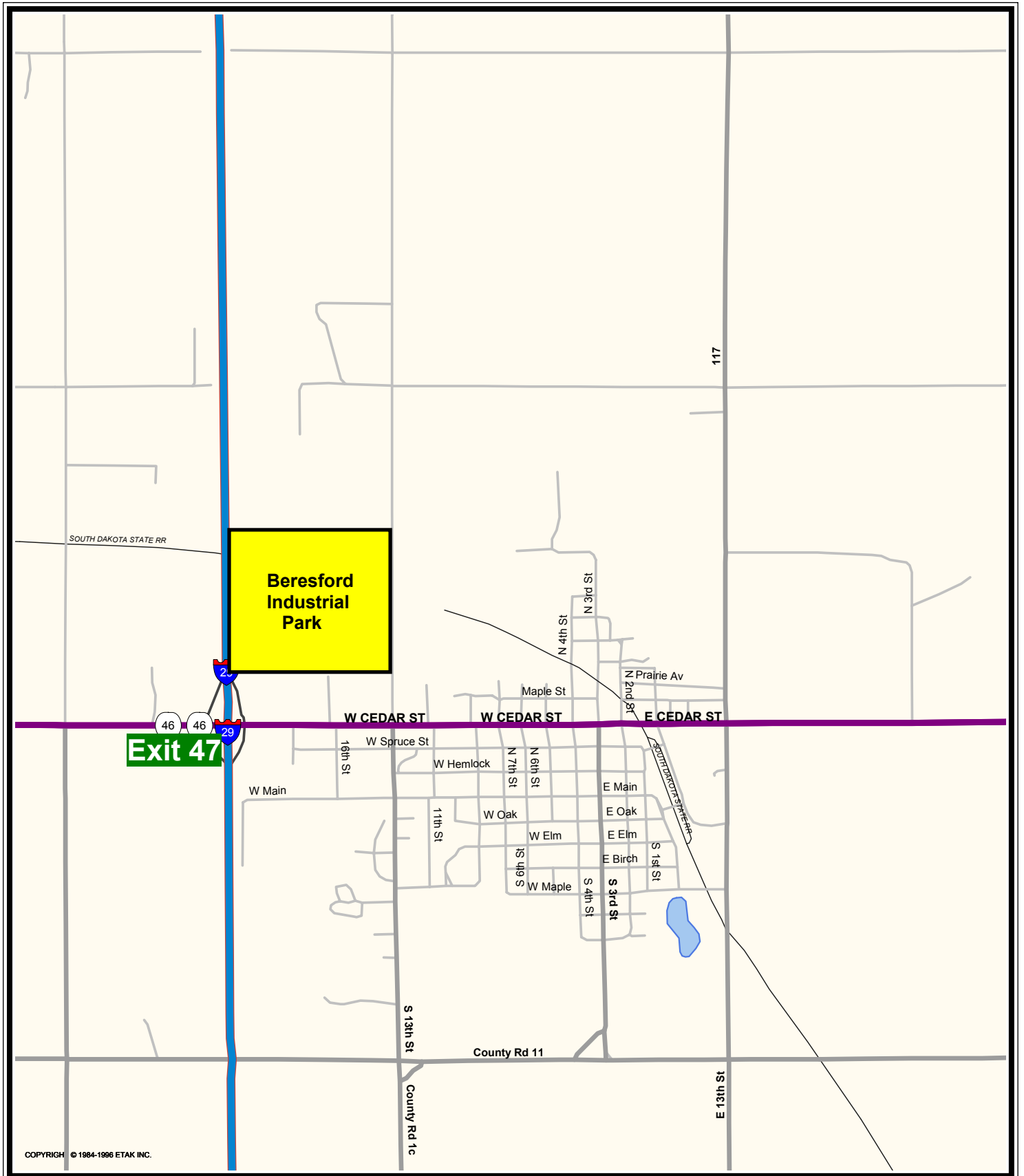
## TRACK RECORD

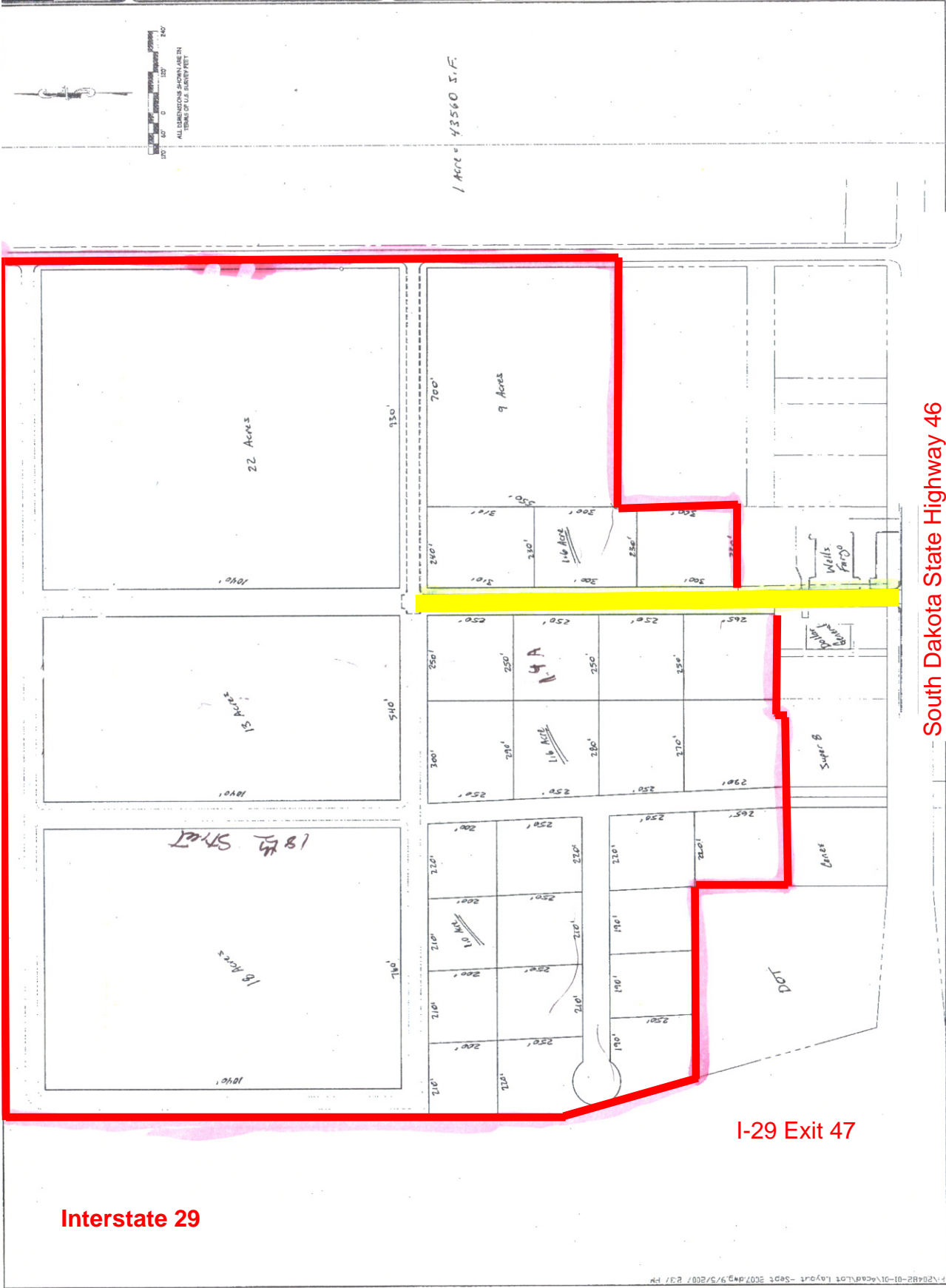
- Slumberland Distribution Center (TIF Financing)
- Quality Park Manufacturing (Build to suit with long term lease)

## MAJOR EMPLOYERS

- Quality Park Manufacturing
- Sioux Steam
- Showplace Wood Products
- Slumberland Distribution Center

# Beresford, SD





South Dakota State Highway 46

Park Boundaries

Existing Street



Interstate 29

I-29 Exit 47



## Existing Gas Lines – Beresford, SD



Date: 2/3/2006

Scale: 1 Inch = 250 Foot

Notes: Beresford

Field View X:760462 Y:1141516 X:760722 Y:1141235 X:760723 Y:1141234